

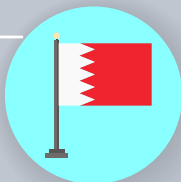


# AHLIA SCHOOL GRADUATE PROFILE

المدرسة الأهلية  
AHLIA SCHOOL  
BAHRAIN

## Responsible citizen

- \* Embraces Bahraini values, ethics, and culture.
- \* Holds a positive approach towards Bahrain, community and environment.
- \* Empathizes with others and appreciates their perspectives.
- \* Resolves problems in a composed manner.
- \* Develops and sustains healthy and long-lasting



## Open minded

- \* Respects the cultural difference.
- \* Thinks critically and rationally.
- \* Deals with the differences with curiosity.
- \* Instilled with empathy.



## Critical thinker

- \* Understands the real-world problems.
- \* Asks questions and develops hypothesis.
- \* Conducts the analytical tasks.
- \* Identifies the areas for improvement.
- \* Suggests possible solutions to sort the problem.
- \* Demonstrates the ability to use critical thinking.



## Investigator & opinion-former

- \* Performs research.
- \* Utilizes research methods and tools.
- \* Develops analysis and draws conclusions.
- \* Distinguishes positive/normative information.
- \* Develops the opinion based on outcomes.



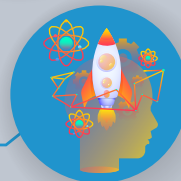
## Lifelong learner

- \* Lifelong learner who incorporates voluntary, and self-motivated pursuit of knowledge for either personal or professional reasons.
- \* Possesses a growth mindset and an innate curiosity about the world.



## Future competent

- Well-prepared for college and career.
- Embedded with required future skills & competencies that are based on cognitive, motivational, and social resources.
- Equipped with skills and competencies to solve complex problems in highly emergent contexts of action in a self-organized way.



## Inspired and skillful innovator

- \* Contains the passion of learning new skills.
- \* Encouraged to take a risk in learning and social context which allows them to try something different coupled with a new passion.



## Responsible decision maker

- \* Equipped with sustainable opportunities enables them to make decisions about their own learning and education through real life.
- \* Experiences engaging them in solving genuine problems and making substantial decisions.